

Newington College



Discover
what's possible



UNIFORM AND GENERAL REGULATIONS

A student is admitted to Newington College on the understanding that his parents or guardians are aware of the aims and policies of the College and will do whatever they can to ensure that they conform with such regulations as the College deems necessary.

UNIFORM SHOPS

The three campuses at Stanmore, Wyvern and Lindfield each operate their own shops, where uniform and other items can be purchased.

WYVERN UNIFORM SHOP

Location: The Wyvern Uniform Shop is located on the ground floor (Level 1) of Wyvern House (115 Cambridge Street, Stanmore) and is accessible via the car park ramp on the Cambridge Street driveway.

Term time operating hours: Monday/Thursday 7.30am - 9.00am
Tuesday 2.30pm - 4.00pm (First Tuesday of each Term ONLY)

New and second-hand items are available for sale in the Wyvern Uniform shop.
Operated by the Wyvern Parent' and Friends' Association.

LINDFIELD UNIFORM SHOP

Location: The Lindfield Uniform Shop is located adjacent to the school reception at the Lindfield campus (26 Northcote Road, Lindfield).

Term time operating hours: Monday 3.00pm - 3.45pm
Wednesday 8.00am - 8.45am

The second-hand clothing shop is open on the first Wednesday of each month during term time from 8.00am - 8.30am.

Operated by the Lindfield Parent' and Friends' Association.

STANMORE UNIFORM SHOP

The Newington Shop at Concordia (over the road from the Stanmore campus) stocks all Years 7–12 uniforms.

The following items are available: blazers, trousers, shorts, shirts, polo-shirts, pullovers, socks, ties, belts, school bags, sports items, crested goods, etc.

Term time operating hours: Monday to Friday 8.00am–4.30pm.

1st Saturday of each school term 8.00am–12.00noon. Refer to the Black & White newsletter for variations to these times.

Operated by Midford/Stamina: ph 02 9568 9427

It is preferable to make an appointment for new students to ensure that attention can be given to each child.

SECOND-HAND CLOTHING POOL YEARS 7–12

Located in the Concordia building opposite the Stanmore 7–12 campus, the Second Hand Clothing Pool is operated by the Newington Women's Group. The Clothing Pool will be open during school term on Wednesdays 8am-9.30am and 3pm-4.30pm; Fridays 8am-9.30am. It will be open on the first Monday of each Term from 8am-9.30am and other times as notified on New Spaces.

GENERAL REGULATIONS

Minor differences of practice are followed in the two Preparatory Schools. Parents are advised of these separately.

APPEARANCE

Uniform school clothing, as described hereunder, must be worn to and from school, and on all school and GPS occasions. There are only two exceptions to this general regulation: reasonably informal clothing (shirt with a collar, long trousers, shoes and socks) may be worn to rehearsals and to evening plays and concerts, and appropriate, clean Newington sports wear may be worn by students travelling to and from sport on a Saturday as players.

Jackets and trousers must be clean and pressed. Shoes must be clean. Hair must be tidy and reasonably short, not dyed, and neither grown nor groomed in an extravagant fashion. No jewellery other than approved Newington badges may be worn. If some emergency forces a student to wear a non-uniform article of clothing to school, they must bring the GDO a note from their parents explaining the circumstances. Extended leave will involve approval from the Head of Stanmore.

UNIFORM REGULATIONS – STANMORE

ALL ARTICLES OF CLOTHING MUST BE CLEARLY AND INDELIBLY LABELLED.

STANDARD UNIFORM – compulsory during Terms 2 and 3

BLAZER:	Made of back 100% wool and bound at the edges to show white braid 1.5cm wide, with braid also 7.5cm from bottom of cuffs and 1.5cm from top of pockets. There is a white standard Newington crest (Wyvern) on the pocket.
TROUSERS:	Long cuffless mid-grey made of wool blend (45% wool, 55% polyester) and worn with a black belt.
SHIRT:	White long-sleeved with double button-down pockets, pen-hole opening allowance on left pocket flap, full yoke, 2-way deluxe collar with stiffness for all sizes, and Newington crest (Wyvern) on pocket.
TIE:	YEARS 7–9: Diagonal black and white stripes. YEARS 10–11: Diagonal black and white stripes, with black Wyverns on white stripe panels. YEAR 12: House Prefect tie.
SOCKS/SHOES:	Black socks and black lace-up school shoes.
PULLOVER:	Black with raglan sleeve and rimolde neckline. White Wyvern including motto IN FIDE SCIENTIAM positioned on left breast.
RAINCOAT:	Safety yellow or Newington Coat.
APRON:	A protective apron is available for use in Design & Technology classes, and in Science Practical classes.

SUMMER UNIFORM – optional during Terms 1 and 4

YEARS 7–9:	White short-sleeved with double button-down pockets, pen-hole opening allowance on left pocket flap, full yoke, 2-way deluxe collar with stiffness for all sizes, and Newington crest (Wyvern) on pocket; college tie; standard uniform trousers, or mid-grey polyester-and-viscose Bermuda shorts; for shorts with belt-loops, black belt; mid-grey long socks with Newington tops; shoes as for Standard Uniform. Pullovers may be worn.
YEARS 10–12:	White short-sleeved with double button-down pockets, pen-hole opening allowance on left pocket flap, full yoke, 2-way deluxe collar with stiffness for all sizes, and Newington crest (Wyvern) on pocket; college tie; standard uniform trousers, or navy blue polyester-and-viscose Bermuda shorts; for shorts with belt-loops, black belt; white long cotton/polyester socks; shoes as for Standard Uniform. Pullovers may be worn.

UNIFORM REGULATIONS – STANMORE

SUMMER UNIFORM (continued)

CAP:	The wearing of the Newington baseball-style cap is encouraged only within the college grounds, and with approved sports dress elsewhere.
SCHOOL BAG:	Black Newington backpack. (Black Caribee College 30s and College 35s action back system, with logo blackened out, are also permissible.) No other bag is permitted. Sports bag must be a black Newington sports bag or plain black bag.

AFTER SPORT TRAINING UNIFORM – on public transport

SUMMER SEASON (TERMS 1 AND 4) : PE uniform or school uniform

SATURDAYS (SUMMER SEASON): Basketball / tennis / cricket attire with track suit top if required.

WINTER SEASON (TERMS 2 AND 3) : Full school uniform, Full school tracksuit

SATURDAYS (WINTER SEASON): Rugby / football / volleyball attire with track suit if required

HOUSE SUPPORT DAY (WINTER SEASON): Either full tracksuit or school uniform

UNIFORM REGULATIONS – STANMORE

COLOURS AND OTHER AWARDS

No awards may be bought or worn without an 'authority to buy' addressed to the supplier and signed by the Head of Secondary or the Sportsmaster. If any addition or alteration is to be made, a similar authority is required, and the blazer must be presented to the Head of Secondary or Sportsmaster when authority is sought.

If a student is awarded Letters for an activity in more than one year (a re-date) it will be recorded thus:

2nd CRICKET PREMIERS 2000-2001

House Colours Badge and House Honour Colours Badge: Worn beside the left side-pocket of the blazer, such that the top of the badge will be on a line level with the bottom edge of the white braid of the pocket and the top edge of the badge will be 1.5 cm from the edge of the pocket.

GPS Colours Badge: GPS Colours badge is worn beneath House Colours badge. If a student is awarded more than one GPS badge the second and subsequent badges are worn on the pocket.

Cadet Colours Badge: Worn beside the right side-pocket of the blazer, such that the top of the badge will be on a line level with the bottom edge of the white braid of the pocket and the top edge of the badge will be 1.5 cm from the edge of the pocket.

Only Newington College and GPS cloth badges are worn on the Newington blazer.

If a student is awarded Colours, they are entitled to wear a special 'Firsts' crest (the Coat of Arms) on their blazer pocket, together with words and dates on the pocket after this fashion:

CRICKET 2010

ATHLETICS 2011

If a student is awarded Colours for an activity in more than one year (a re-date), it will be recorded thus:

RUGBY 2010-2011

ROWING 2010-2011-2012

That is to say, the name of the activity will appear only once.

If a student wins several colours and finds there is not enough room on the breast-pocket below the scroll, the Colours may be placed just below the pocket.

If a student is awarded Letters as a member of a premiership seconds team or crew, they are entitled to words and dates on the pocket after this fashion:

2nd CRICKET PREMIERS 2010

2nd VIII PREMIERS 2009

Please note that this award does not entitle the wearing of the 'Firsts Crest'.

NEWINGTON COLLEGE

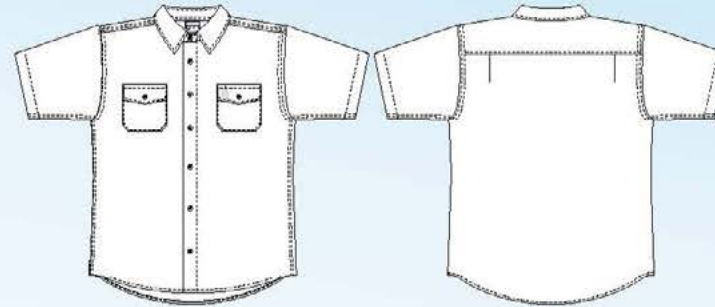
YRS 7 - 9 ACADEMIC UNIFORM



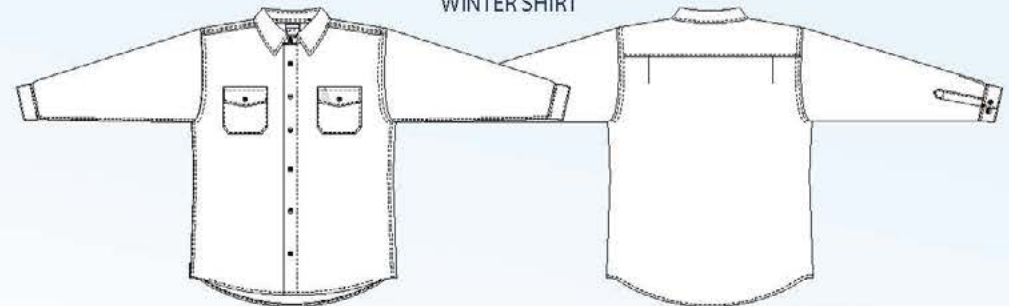
BLAZER



SUMMER SHIRT



WINTER SHIRT



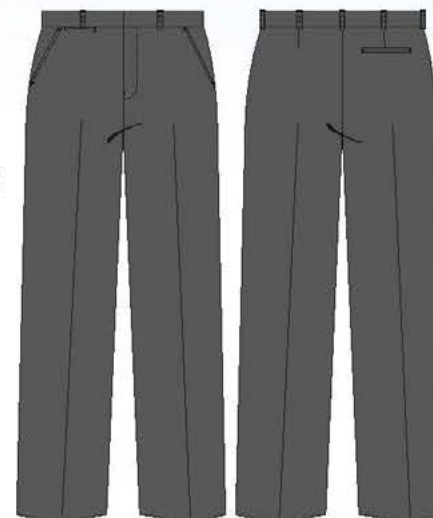
JUMPER



SHORTS



TROUSERS



SCHOOL SHOES



WINTER SOCK



CAP



BELT



TIE



SUMMER SOCK



SINCE 1948
midford

Copyright in relation to these design concepts developed by midford for Newington College are owned by midford 2010-2014

NEWINGTON COLLEGE

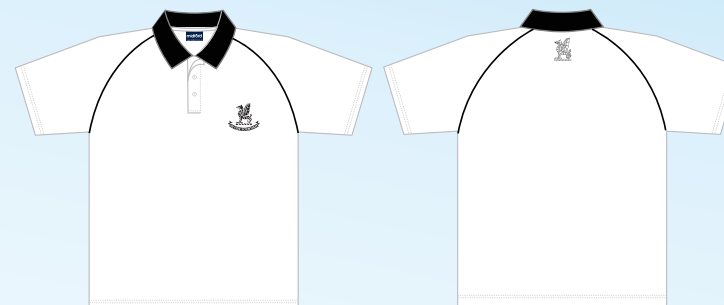
P.E. Uniform - Retail Version



MICROFIBRE TRACK JACKET



P.E. POLO



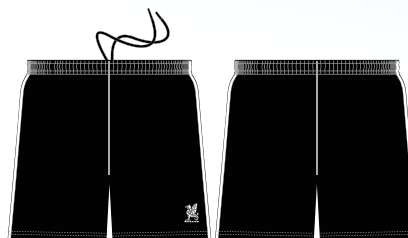
P.E. CAP



MICROFIBRE TRACK PANT



MICROFIBRE P.E. SHORT



PLAIN WHITE SPORT SOCKS



SINCE 1946
midford

Copyright in relation to these design concepts
developed by Midford for Newington College are
owned by Midford
20-10-2014

NEWINGTON COLLEGE

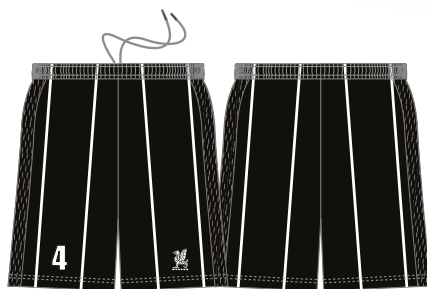
Basketball, Cricket, Tennis & Volleyball Uniforms - Retail Version



BASKETBALL ALL SCHOOL SINGLET



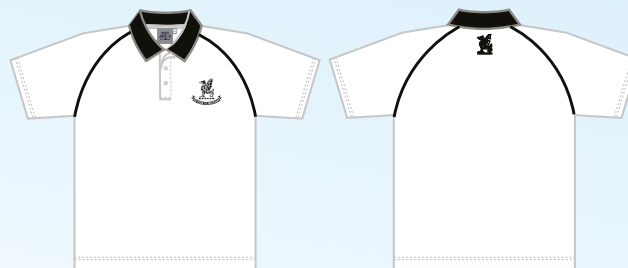
BASKETBALL ALL SCHOOL SHORTS



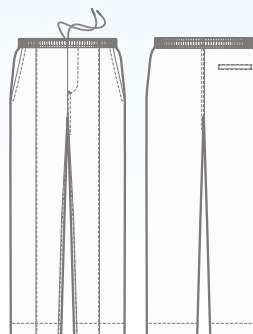
BASKETBALL ALL SCHOOL SOCKS



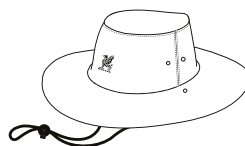
CRICKET ALL SCHOOL (P.E POLO)



CRICKET PANTS



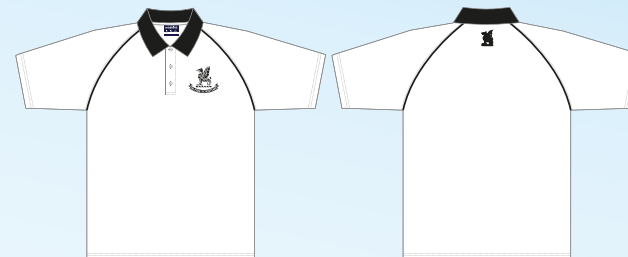
CRICKET HAT



CRICKET ALL SCHOOL CAP



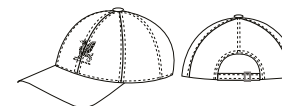
TENNIS & VOLLEYBALL ALL SCHOOL (P.E POLO)



TENNIS SHORTS ALL SCHOOL (P.E. SHORT)



TENNIS CAP (ROWING CAP)



TENNIS SOCKS



SINCE 1946
midford

Copyright in relation to these design concepts developed by Midford for Newington College are owned by Midford 20-10-2014

NEWINGTON COLLEGE

Rowing, Swimming & Waterpolo Uniforms - Retail Version



ROWING ALL SCHOOL ZOOT SUIT



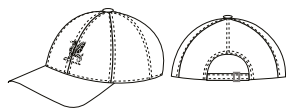
ROWING WHITE TERRY HAT



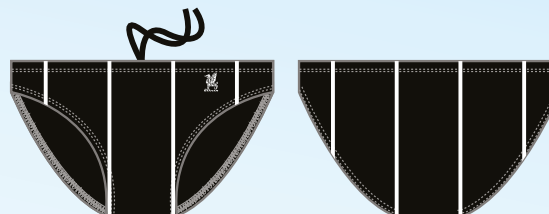
ROWING SOCKS
(RUGBY SOCKS)



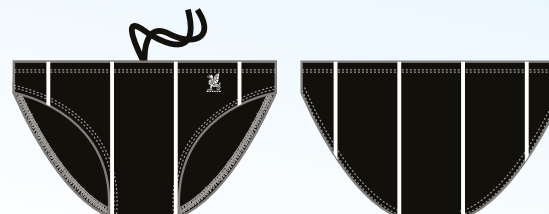
ROWING ALL SCHOOL CAP



WATER POLO ALL SCHOOL - Duramax/Double Lining
(can be worn for swimming)



SWIMMING ALL SCHOOL - Max Resist



SWIMMING ALL SCHOOL JAMMERS - Max Resist



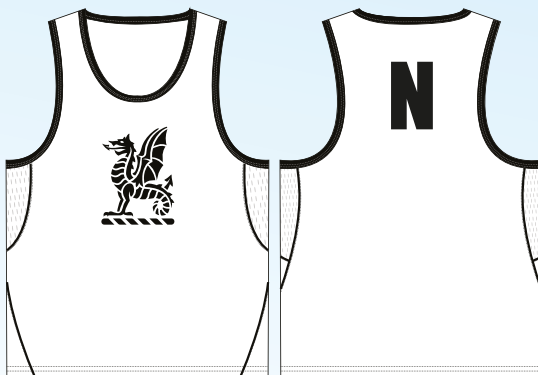
SINCE 1946
midford

Copyright in relation to these design concepts
developed by Midford for Newington College are
owned by Midford
20-10-2014

NEWINGTON COLLEGE

Athletics & Fencing Uniforms - Retail Version

SENIOR ATHLETICS / 1ST CROSS COUNTRY SINGLET



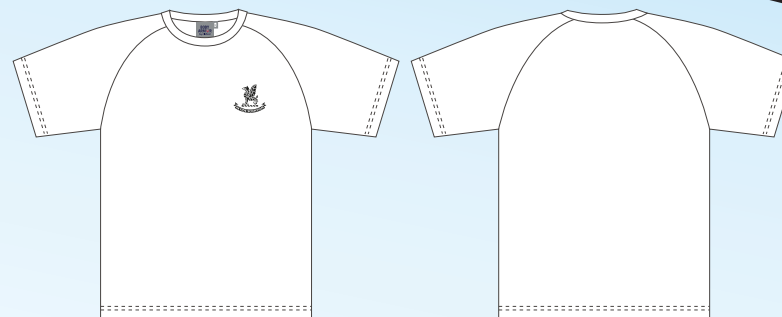
INTERMEDIATE / JUNIOR ATHLETICS SINGLET



ATHLETICS / CROSS COUNTRY SHORTS



FENCING TEE



MICROFIBRE TRACK PANT (P.E. PANT)



SINCE 1946
midford

Copyright in relation to these design concepts
developed by Midford for Newington College are
owned by Midford
20-10-2014

NEWINGTON COLLEGE

Rugby & Football Uniforms - Retail Version

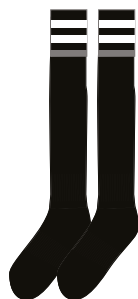
RUGBY ALL SCHOOL JERSEY



RUGBY ALL SCHOOL SHORT



RUGBY ALL SCHOOL SOCKS



FOOTBALL ALL SCHOOL



FOOTBALL ALL SCHOOL SHORTS



GOALIE ALL SCHOOL JERSEY



FOOTBALL SOCKS (RUGBY SOCKS)



SINCE 1946
midford

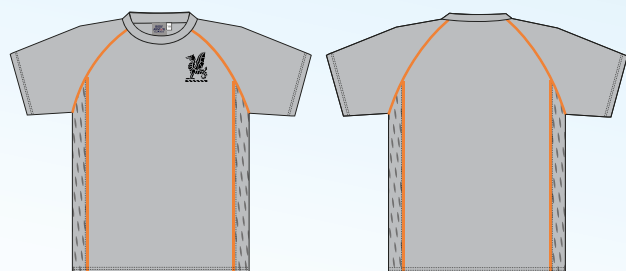
Copyright in relation to these design concepts
developed by Midford for Newington College are
owned by Midford
20-10-2014

NEWINGTON COLLEGE

Training Range - Retail Version



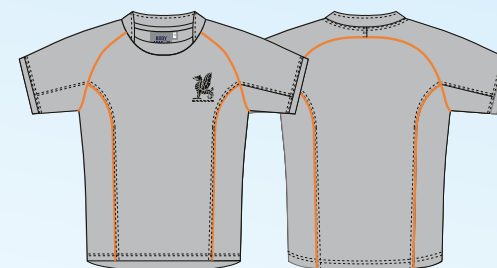
TRAINING ALL SCHOOL S/S TEE



TRAINING ALL SCHOOL L/S TOP



RUGBY TRAINING JERSEY



BASKETBALL REVERSIBLE TRAINING SINGLET

REVERSED SIDE - BLACK



SINCE 1946
midford

Copyright in relation to these design concepts
developed by Midford for Newington College are
owned by Midford
20-10-2014

NEWINGTON COLLEGE

BSC Compression Range - Retail Version

MUSCLE TEE



FULL QUAD



* WHITE - to be worn under all white garments

*BLACK - to be worn under all black garments

MUSCLE TEE



FULL QUAD



ELITE ATHLETIC LONGS



SINCE 1946
midford

Copyright in relation to these design concepts
developed by Midford for Newington College are
owned by Midford
20-10-2014

UNIFORM REGULATIONS – PREPARATORY

SUMMER UNIFORM – TERMS 1 AND 4

SHIRT:	Short sleeve grey and white striped shirt.
SHORTS:	Mid grey polyester/viscose elastic back shorts.
SOCKS:	Grey cotton/nylon long socks with Newington-striped tops.
TIE:	Tie with diagonal black and white stripes.
SHOES:	Black lace-up school shoes.
HAT:	Black short-peaked cap with Newington crest.

WINTER UNIFORM – TERMS 2 AND 3

SHIRT:	Long sleeve grey and white striped shirt.
SHORTS:	Grey polyester/wool blend shorts.
BLAZER:	Grey polyester/wool blend blazer with single rear vent and Wyvern crest embroidered on left breast pocket.
JUMPER:	Black jumper with Newington crest.
SOCKS:	Grey cotton/nylon long socks with Newington-striped tops.
TIE:	Tie with diagonal black and white stripes.
SHOES:	Black lace-up school shoes.
HAT:	Black short-peaked cap with Newington crest.
SCARF:	Black scarf with white Newington crest embroidered (optional).

SPORTS UNIFORMS

PE:	White polo style shirt (with black collar, black piping, Newington crest embroidered to the front left chest and Wyvern embroidered on the back), PE shorts (black shorts with white piping and Wyvern crest embroidered on the left leg), white socks and predominantly white sport shoes. Tracksuit includes Newington track top (black jacket with white piping, Newington crest embroidered to the front left chest and Wyvern embroidered on the back) and track pants (black with white piping) and must be worn as a complete set when travelling to and from school.
-----	---

UNIFORM REGULATIONS – PREPARATORY

INTER-SCHOOL ATHLETICS AND CROSS-COUNTRY:

Black athletics singlet with white stripes and Wyvern crest, PE shorts, white socks and predominantly white sport shoes.

SCHOOL ALTHETICS AND CROSS-COUNTRY:

House coloured polo style shirt, PE shorts, white socks and predominantly white shoes.

SPORTS UNIFORMS - SUMMER

BASKETBALL: Basketball singlet, basketball shorts, white socks and predominantly white sports shoes or basketball shoes.

CRICKET: White polo style short or long sleeve shirt with Newington crest embroidered, plain white shorts or white cricket trousers, ankle length white socks, white sport shoes, white wide brim hat with green under brim and Newington crest embroidered.

TENNIS: *(Wyvern only)*
FOR STUDENTS IN INTER-SCHOOL IPSHA COMPETITION AND RESERVES:
White polo style short sleeve shirt with Newington crest embroidered, plain white shorts, white NC cap, ankle length white socks, white sport shoes.

FOR STUDENTS IN ALL OTHER TEAMS:
Standard PE uniform, white NC cap.

TOUCH
FOOTBALL: *(Lindfield only)*
Black athletics singlet with white stripes and Wyvern crest, PE shorts, white socks and football boots (preferred).

SWIMMING: Black jammers with white stripes and Wyvern logo on left leg.

WATERPOLO: *(Wyvern only)*
Black jammers with white stripes and Wyvern logo on left leg.

UNIFORM REGULATIONS – PREPARATORY

SPORTS UNIFORMS - WINTER

AFL:	Black AFL jersey with vertical stripes and Wyvern crest. Plain black rugby shorts, black rugby socks with white stripes, football boots. Mouthguards are compulsory. Headgear is personal preference. Black training top required at Lindfield.
FENCING:	<i>(Wyvern only)</i> White PE polo, Newington tracksuit pants, plain white ankle length socks and predominantly white sport shoes. Fencing mask and glove required (organised through the school).
FOOTBALL:	Black football jersey with vertical white stripes and Wyvern crest. Plain black football shorts, black socks with white stripes, football boots. Mouthguards are personal preference. Shin pads are compulsory. Black training top required at Lindfield.
RUGBY:	Black rugby jersey with horizontal white stripes and Wyvern crest. Plain black rugby shorts, black rugby socks with white stripes, football boots. Mouthguards are compulsory. Headgear is personal preference. Black training top required at Lindfield.
TENNIS:	<i>(Wyvern only)</i> FOR STUDENTS IN INTER-SCHOOL IPSHA COMPETITION AND RESERVES: White polo style short sleeve shirt with Newington crest embroidered, plain white shorts, white NC cap, ankle length white socks, white sport shoes. FOR STUDENTS IN ALL OTHER TEAMS: Standard PE uniform, white NC cap.

UNIFORM REGULATIONS – PREPARATORY

OTHER ITEMS

ART FOLDER:	Plain black A3 art folder.
ART SMOCK:	White art smock with black neckline, front pocket and built in towel.
BOOT BAG:	Black boot bag with white Newington crest (optional).
BACKPACK:	Black backpack with white Newington crest.
HAT:	At Wyvern House, a white wide brim hat with green under brim and embroidered Newington crest for all students Kindergarten to Year 6. At Lindfield, a white wide brim hat with green under brim and embroidered Newington crest for all students Year 1 to Year 6. A yellow hat with embroidered Newington crest for Kindergarten students. Hats are compulsory for outside play at morning-break and lunchtime, and when walking to and from summer sport training.
LIBRARY BAG:	Black library bag with white Newington crest.
MUSIC BAG:	Black music bag (with strap) with white Newington crest.
MUSIC FOLDER:	Black rondofile A4 display book with silver foil Newington crest.
RAINCOAT:	Clear raincoat. To be taken on external excursions and can be worn to and from school on wet weather days.
SPORTS BAG:	Black sports bag with white Newington crest.

WYVERN UNIFORM SHOP

The Wyvern Uniform Shop is located on the ground floor (Level 1) of Wyvern House (115 Cambridge Street, Stanmore) and is accessible via the car park ramp on the Cambridge Street driveway.

LINDFIELD UNIFORM SHOP

The Lindfield Uniform Shop is located adjacent to the school reception at the Lindfield campus (26 Northcote Road, Lindfield).

UNIFORM REGULATIONS – ELC

UNIFORM REGULATIONS - ELC

ELC uniforms are available to purchase from the Wyvern Uniform Shop located on the ground floor (Level 1) of Wyvern House, 115 Cambridge Street Stanmore. Access is via the car park ramp on the Cambridge Street driveway, adjacent to the main entrance to Wyvern House.

PE POLO:	White polo style shirt (with black collar, black piping, Newington crest embroidered to the front left chest and Wyvern embroidered on the back)
PE SHORTS:	Black shorts with white piping and Wyvern crest embroidered on the left leg.
SKORT:	Black skort with white Newington crest as an optional alternative to PE shorts.
TRACKSUIT:	Can be worn during the cooler months. Black track top with white piping and embroidered Newington crest and black track pants with white piping.
BACKPACK:	Black ELC backpack with white Newington crest.
SOCKS:	Plain white socks.
SHOES:	Predominantly white sport shoes.
LIBRARY BAG:	Black library bag with handle and white Newington crest (for the four-year-old groups)
CAP:	White 'legionnaire style' cap with black Newington crest.



Newington College

200 Stanmore Road **Tel** 02 9568 9333
Stanmore NSW 2048 **Fax** 02 9569 0133

WEB www.newingtoncollege.nsw.edu.au

EMAIL contact@newingtoncollege.nsw.edu.au

Discover
what's possible

