

Newington College



Discover.  
what's possible



UNIFORM AND GENERAL  
**REGULATIONS**



A boy is admitted to Newington College on the understanding that his parents or guardians are aware of the aims and policies of the College and will do whatever they can to ensure that he conforms with such regulations as the College deems necessary.

## **UNIFORM SHOPS**

The three campuses at Stanmore, Wyvern and Lindfield each operate their own shops, where uniform and other items can be purchased.

### **WYVERN SHOP**

Term Time Operating Hours: Mondays/Thursdays 8.00–9.30am  
Tuesdays/Fridays 2.30–3.30pm

Please confirm operating hours with the Wyvern Office: 9568 9444. Operated by the Wyvern Parents' & Friends' Association.

### **PREP SHOP, LINDFIELD**

Term Time Operating Hours: Tuesday 8.00am–9.00am

Please confirm operating hours and appointments with the Lindfield Office: 9416 4280. Operated by the Lindfield Parents' & Friends' Association.

### **THE NEWINGTON SHOP – STANMORE CAMPUS**

The Newington Shop at Concordia stocks all Years 7–12 uniforms.

The following items are available: blazers, trousers, shorts, shirts, polo-shirts, pullovers, socks, ties, belts, school bags, sports items, crested goods, etc.

Term Time Operating Hours: Monday to Friday 8.00am–4.30pm.

1st Saturday of each school term 8.00am–12.00noon. Refer to the Black & White newsletter for variations to these times. Operated by Midford/Stamina: ph 02 9568 9427

To outfit new boys it is preferable to make an appointment so as to ensure that attention can be given to each boy.

### **SECOND-HAND CLOTHING POOL YEARS 7–12**

Located in the Concordia building opposite the Stanmore 7–12 campus, the Second Hand Clothing Pool is operated by the Newington Women's Group. The Clothing Pool will be open during school term on Wednesdays 8am-9.30am and 3pm-4.30pm; Fridays 8am-9.30am. It will be open on the first Monday of each Term from 8am-9.30am and other times as notified on Spaces.

# GENERAL REGULATIONS

---

**Minor differences of practice are followed in the two Preparatory Schools. Parents are advised of these separately.**

## **APPEARANCE**

Uniform school clothing, as described hereunder, must be worn to and from school, and on all school and GPS occasions. There are only two exceptions to this general regulation: reasonably informal clothing (shirt with a collar, long trousers, shoes and socks) may be worn to rehearsals and to evening plays and concerts, and appropriate, clean Newington sports wear may be worn by boys travelling to and from sport on a Saturday as players. Jackets and trousers must be clean and pressed. Shoes must be clean. Hair must be tidy and reasonably short, not dyed, and neither grown nor groomed in an extravagant fashion. No jewellery other than approved Newington badges may be worn. If some emergency forces a boy to wear a non-uniform article of clothing to school, he must bring to the GDO a note from his parents explaining the circumstances. Extended leave with involve approval from the Head of Stanmore.

# UNIFORM REGULATIONS – STANMORE

---

**ALL ARTICLES OF CLOTHING MUST BE CLEARLY AND INDELIBLY LABELLED.**

## **STANDARD UNIFORM – compulsory during Terms 2 and 3**

- BLAZER:** Made of back 100% wool and bound at the edges to show white braid 1.5cm wide, with braid also 7.5cm from bottom of cuffs and 1.5cm from top of pockets. There is a white standard Newington crest (Wyvern) on the pocket.
- TROUSERS** Long cuffless mid-grey made of wool blend (45% wool, 55% polyester) and worn with a black belt.
- SHIRT:** White long-sleeved with double button-down pockets, pen-hole opening allowance on left pocket flap, full yoke, 2-way deluxe collar with stiffness for all sizes, and Newington crest (Wyvern) on pocket.
- TIE** YEARS 7–9: Diagonal black and white stripes. YEARS 10–11: Diagonal black and white stripes, with black Wyverns on white stripe panels.  
YEAR 12: House Prefect tie.
- SOCKS/SHOES:** Black socks and black lace-up school shoes.
- PULLOVER:** Black with raglan sleeve and rimolde neckline. White Wyvern including motto IN FIDE SCIENTIAM positioned on left breast.
- RAINCOAT:** Safety yellow or Newington Coat.
- APRON:** A protective apron is available for use in Design & Technology classes, and in Science Practical classes.

## **SUMMER UNIFORM – optional during Terms 1 and 4**

- YEARS 7–9:** White short-sleeved with double button-down pockets, pen-hole opening allowance on left pocket flap, full yoke, 2-way deluxe collar with stiffness for all sizes, and Newington crest (Wyvern) on pocket; college tie; standard uniform trousers, or mid-grey polyester-and-viscose Bermuda shorts; for shorts with belt-loops, black belt; mid-grey long socks with Newington tops; shoes as for Standard Uniform. Pullovers may be worn.
- YEARS 10–12:** White short-sleeved with double button-down pockets, pen-hole opening allowance on left pocket flap, full yoke, 2-way deluxe collar with stiffness for all sizes, and Newington crest (Wyvern) on pocket; college tie; standard uniform trousers, or navy blue polyester-and-viscose Bermuda shorts; for shorts with belt-loops, black belt; white long cotton/polyester socks; shoes as for Standard Uniform. Pullovers may be worn.

# UNIFORM REGULATIONS – STANMORE

---

## **SUMMER UNIFORM (continued)**

**CAP:** The wearing of the Newington baseball-style cap is encouraged only within the college grounds, and with approved sports dress elsewhere.

**SCHOOL BAG:** Black Newington backpack. (Black Caribee College 30s and College 35s action back system, with logo blackened out, are also permissible.) No other bag is permitted.

Sports bag must be a black Newington sports bag or plain black bag.

## **AFTER SPORT TRAINING UNIFORM – on public transport**

**SUMMER SEASON (TERMS 1 AND 4):** PE uniform or school uniform

**SATURDAYS (SUMMER SEASON):** Basketball / tennis / cricket attire with track suit top if required.

**WINTER SEASON (TERMS 2 AND 3):** Full school uniform, Full school tracksuit

**SATURDAYS (WINTER SEASON):** Rugby / football / volleyball attire with track suit if required

**HOUSE SUPPORT DAY (WINTER SEASON):** Either full tracksuit or school uniform

# NEWINGTON COLLEGE

## YRS 7 - 9 ACADEMIC UNIFORM

Page 1

BLAZER



JUMPER



CAP



WINTER SOCK



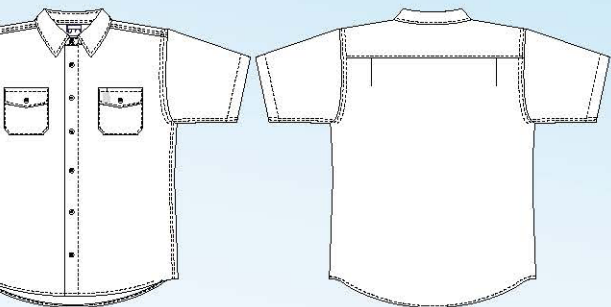
BELT



TIE



SUMMER SHIRT



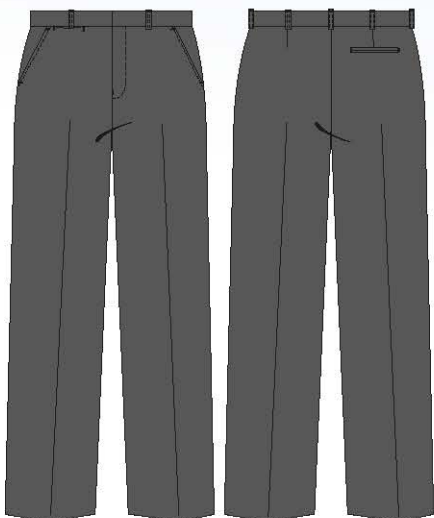
WINTER SHIRT



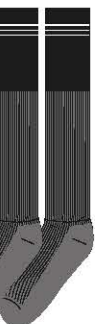
SHORTS



TROUSERS



SUMMER SOCK



SCHOOL SHOES



SINCE 1948  
**midford**

Copyright in relation to these designs concepts developed by Midford for Newington College are owned by Midford 30-10-2014

# UNIFORM REGULATIONS – STANMORE

---

## COLOURS AND OTHER AWARDS

No awards may be bought or worn without an 'authority to buy' addressed to the supplier and signed by the Head of Secondary or the Sportsmaster. If any addition or alteration is to be made, a similar authority is required, and the blazer must be presented to the Head of Secondary or Sportsmaster when authority is sought.

If a boy is awarded Letters for an activity in more than one year (a re-date) it will be recorded thus:

2nd CRICKET PREMIERS 2000-2001

House Colours Badge and House Honour Colours Badge: Worn beside the left side-pocket of the blazer, such that the top of the badge will be on a line level with the bottom edge of the white braid of the pocket and the top edge of the badge will be 1.5 cm from the edge of the pocket.

GPS Colours Badge: GPS Colours badge is worn beneath House Colours badge. If a boy is awarded more than one GPS badge the second and subsequent badges are worn on the pocket.

Cadet Colours Badge: Worn beside the right side-pocket of the blazer, such that the top of the badge will be on a line level with the bottom edge of the white braid of the pocket and the top edge of the badge will be 1.5 cm from the edge of the pocket.

Only Newington College and GPS cloth badges are worn on the Newington blazer.

If a boy is awarded Colours, he is entitled to wear a special 'Firsts' crest (the Coat of Arms) on his blazer pocket, together with words and dates on the pocket after this fashion:

CRICKET 2010

ATHLETICS 2011

If a boy is awarded Colours for an activity in more than one year (a re-date), it will be recorded thus:

RUGBY 2010-2011

ROWING 2010-2011-2012

That is to say, the name of the activity will appear only once.

If a boy wins several colours and finds there is not enough room on the breast-pocket below the scroll, the Colours may be placed just below the pocket.

If a boy is awarded Letters as a member of a premiership seconds team or crew, he is entitled to words and dates on the pocket after this fashion:

2nd CRICKET PREMIERS 2010

2nd VIII PREMIERS 2009

Please note that this award does not entitle the wearing of the 'Firsts Crest'.



# UNIFORM REGULATIONS – PREPARATORY

---

## STANDARD UNIFORM – Compulsory during Terms 2 and 3

- SUIT:** Mid-grey wool blend (45% wool, 55% polyester). Coat is of standard cut, single breasted with three buttons, standard lapels, crest embroidered on breast pocket, short trousers, grey belt. The coat may have a single rear vent.
- SHIRT:** Long sleeve style. Yarn dyed grey-white stripe, double button down pockets, pen-hole opening allowance on left pocket flap, full yoke, 2 way deluxe collar for all sizes.
- TIE:** Uniform tie, 100% polyester, diagonal black and white stripes.
- SOCKS:** Mid-grey wool-and-nylon long socks with Newington-striped tops.
- SHOES AND CAP:** Black lace-up school shoes; black short-peaked cap with Newington crest.
- PULLOVER:** Black with raglan sleeve and rimolde neckline. White Wyvern including motto: IN FIDE SCIENTIAM, positioned on left breast.

## SUMMER UNIFORM

- SHIRT:** As above, but short-sleeved.
- SHORTS:** College mid-grey polyester-and-viscose permanent-press.  
*Kindergarten & Years 1 – 2:* boxer-style shorts with shirred elastic waist. *Years 3 – 6:* half-shirred elastic back and extended front waistband, no side buckles, zip fly.
- SOCKS:** As for Standard Uniform but cotton and nylon stretch.
- TIE:** As for Standard Uniform. Not required below Year 3 at Lindfield.
- SHOES AND CAP:** As for Standard Uniform.

## BLAZER OUTFIT

- OPTIONAL:** As for Stanmore Campus (the cap is not worn with the blazer outfit).

## SPORTS CLOTHING AND OTHER ITEMS

- HAT:** At Wyvern House, a uniform white hat with Wyvern on front and green under the brim; an alternative at Lindfield is a white 'legionnaire style' cap with Wyvern on the front and with neck-flap. Hats are compulsory for outside play at morning-break and lunchtime, and at sport.

# UNIFORM REGULATIONS – PREPARATORY

---

## **SPORTS CLOTHING AND OTHER ITEMS (continued)**

- PE:** White polo style shirt with black collar, placard and trim on sleeve edge with black Wyvern including motto: IN FIDE SCIENTIAM, positioned on left breast, black PE shorts, white socks and white shoes.
- INTER-SCHOOL ATHLETICS AND CROSS-COUNTRY:**  
Black and white striped athletics singlet, PE shorts (black running style shorts optional), white socks and predominantly white shoes.
- SCHOOL ATHLETICS AND CROSS-COUNTRY:**  
House coloured polo shirt, PE shorts (black running style shorts optional), white socks and predominantly white shoes.
- BASKETBALL:** Newington basketball uniform, predominantly white joggers or basketball shoes with nonmarking soles.
- CRICKET:** White standard short sleeved Newington cricket shirt (not crew neck), white polyester and viscose permanent press shorts (or as an option for cricketers, long white trousers and a white long sleeved shirt), ankle length white socks, white sport shoes with non marking soles.
- TENNIS:** Newington tennis uniform as worn in the Stanmore Campus.
- SOFTBALL:** White polo style shirt with black collar, placard and trim on sleeve edge with black Wyvern including motto: IN FIDE SCIENTIAM, positioned on left breast, black PE shorts, Newington black and white striped socks and white shoes.
- RUGBY:** Jerseys, shorts and socks as for Stanmore Campus. Black boots (with moulded soles are preferred), no part of the boots studs may be nylon or plastic. Mouthguards are compulsory for rugby and recommended for soccer. Shin pads are compulsory for soccer.
- SWIMMING:** Plain black speedo trunks. Boys selected in the Newington Swimming team are required to wear plain black trunks with 'NEWINGTON' written on the back.
- TRACKSUIT:** As for Stanmore Campus.
- CASE:** A Newington backpack, available only at the Preparatory Schools.
- ART SMOCK:** A man's long-sleeved shirt, complete with buttons, or a smock cut according to art teacher's pattern.
- RAINCOAT:** Safety yellow.
- SPORTS BAG:** None required for Wyvern. Lindfield boys who want to carry a sports-bag should purchase



# NEWINGTON COLLEGE

P.E. Uniform - Retail Version

Page 1/7

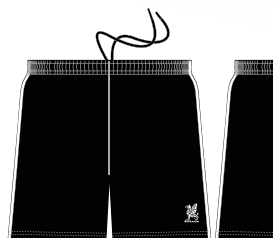
## MICROFIBRE TRACK JACKET



## MICROFIBRE TRACK PANT

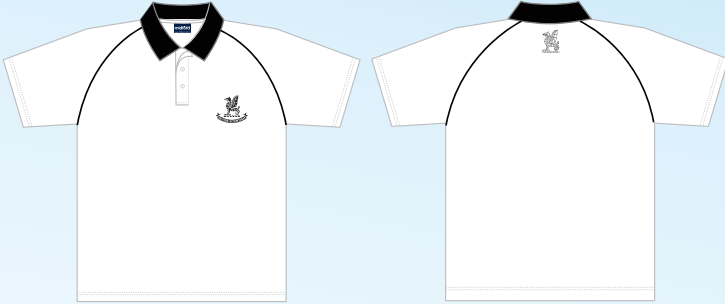


## MICROFIBRE P.E.





P.E. POLO



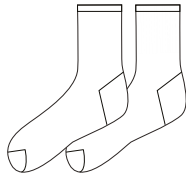
P.E. CAP



SHORT



PLAIN WHITE SPORT SOCKS



SINCE 1946  
**midford**

Copyright in relation to these design concepts developed by Midford for Newington College are owned by Midford 20-10-2014

# NEWINGTON COLLEGE

## Basketball, Cricket, Tennis & Volleyball Uniforms - Retail Version

Page 2/7

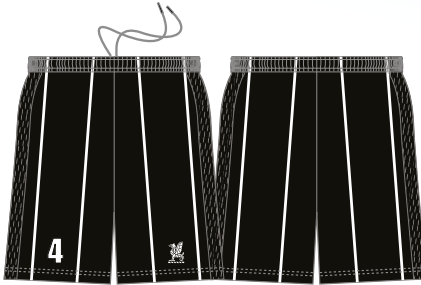
BASKETBALL ALL SCHOOL SINGLET



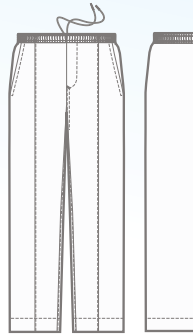
CRICKET ALL SCHOOL SINGLET



BASKETBALL ALL SCHOOL SHORTS



CRICKET PANTS

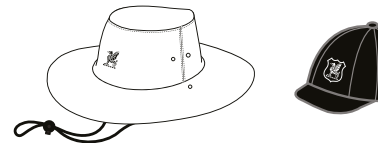


BASKETBALL ALL SCHOOL SOCKS



CRICKET HAT

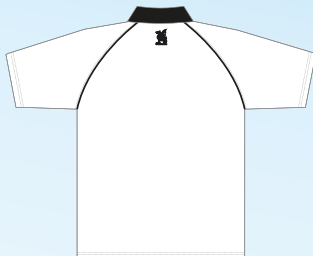
CRICKET HAT





(P.E POLO)

TENNIS & VOLLEYBALL ALL SCHOOL (P.E POLO)



S

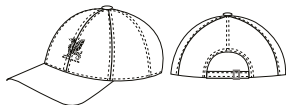
TENNIS SHORTS ALL SCHOOL (P.E. SHORT)



ET ALL SCHOOL CAP

TENNIS CAP (ROWING CAP)

TENNIS SOCKS



SINCE 1946  
**midford**

Copyright in relation to these design concepts developed by Midford for Newington College are owned by Midford  
20-10-2014

# NEWINGTON COLLEGE

## Rowing, Swimming & Waterpolo Uniforms - Retail Version

Page 3/7

### ROWING ALL SCHOOL ZOOT SUIT

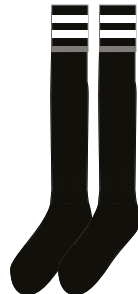
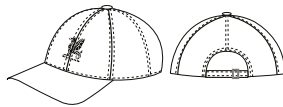


### ROWING WHITE TERRY HAT



### ROWING SOCKS (RUGBY SOCKS)

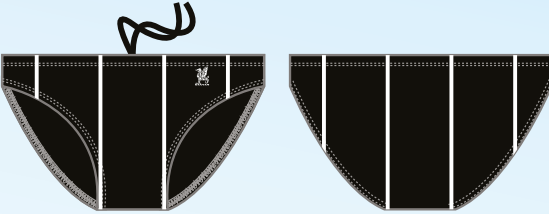
### ROWING ALL SCHOOL CAP



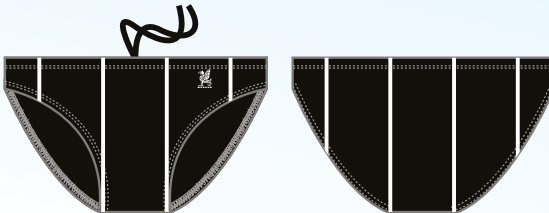




WATER POLO ALL SCHOOL - Duramax/Double Lining  
(can be worn for swimming)



SWIMMING ALL SCHOOL - Max Resist



SWIMMING ALL SCHOOL JAMMERS - Max Resist



SINCE 1946  
**midford**

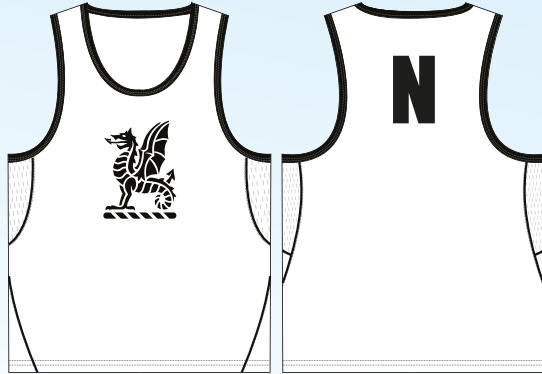
Copyright in relation to these design concepts  
developed by Midford for Newington College are  
owned by Midford  
20-10-2014

# NEWINGTON COLLEGE

## Athletics & Fencing Uniforms - Retail Version

Page 4/7

SENIOR ATHLETICS / 1ST CROSS COUNTRY SINGLET



INTERMEDIATE / JUNIOR ATHLETICS SINGLET

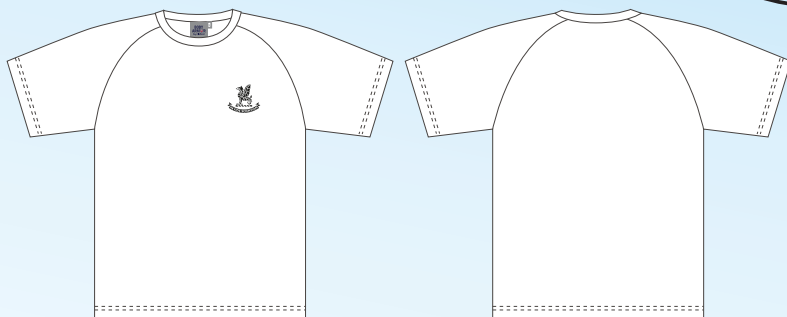


ATHLETICS / CROSS COUNTRY SHORTS

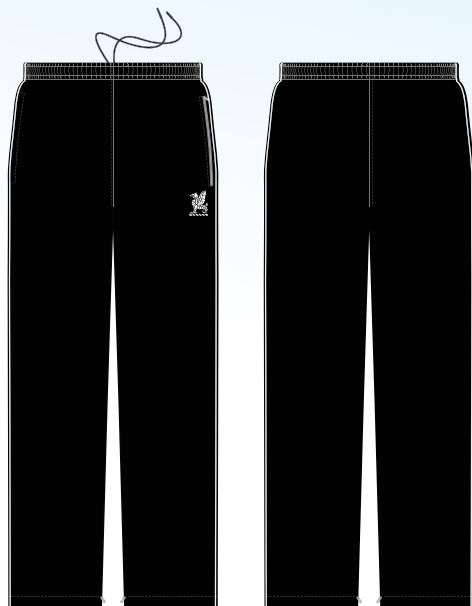




FENCING TEE



MICROFIBRE TRACK PANT (P.E. PANT)



SINCE 1946  
**midford**

Copyright in relation to these design concepts developed by Midford for Newington College are owned by Midford 20-10-2014

# NEWINGTON COLLEGE

## Rugby & Football Uniforms - Retail Version

Page 5/7

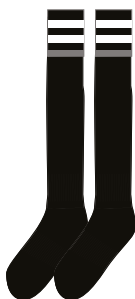
### RUGBY ALL SCHOOL JERSEY



### RUGBY ALL SCHOOL SHORT



### RUGBY ALL SCHOOL SOCKS





### FOOTBALL ALL SCHOOL



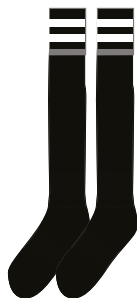
### FOOTBALL ALL SCHOOL SHORTS



### GOALIE ALL SCHOOL JERSEY



### FOOTBALL SOCKS (RUGBY SOCKS)



SINCE 1946  
**midford**

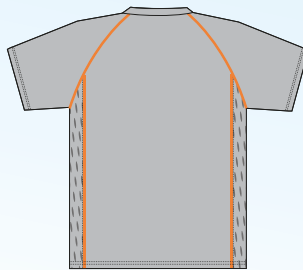
Copyright in relation to these design concepts developed by Midford for Newington College are owned by Midford  
20-10-2014

# NEWINGTON COLLEGE

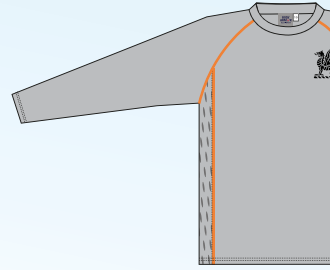
## Training Range - Retail Version

Page 6/7

TRAINING ALL SCHOOL S/S TEE



TRAINING ALL SCHOOL L/S TEE

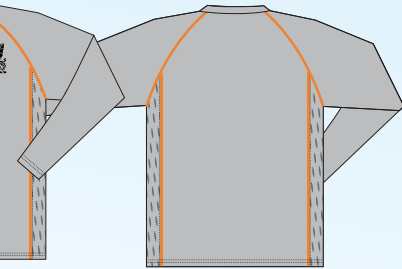


BASKETBALL REVERSIBLE TRAINING SINGLET

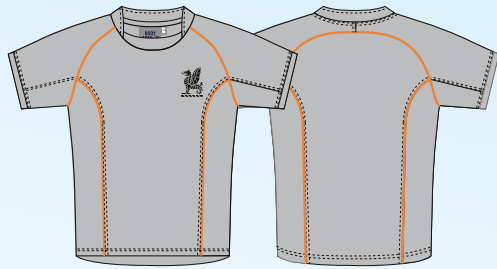




NG ALL SCHOOL L/S TOP



RUGBY TRAINING JERSEY



REVERSED SIDE - BLACK



SINCE 1946  
**midford**

Copyright in relation to these design concepts developed by Midford for Newington College are owned by Midford  
20-10-2014

# NEWINGTON COLLEGE

## BSC Compression Range - Retail Version

Page 7/7

### MUSCLE TEE



### FULL QUAD



\* WHITE - to be worn under all white garments

\*BLACK - to be worn under all black garments



## MUSCLE TEE



## FULL QUAD



## ELITE ATHLETIC LONGS



SINCE 1946  
**midford**

Copyright in relation to these design concepts developed by Midford for Newington College are owned by Midford 20-10-2014



# Newington College

200 Stanmore Road    **Tel** 02 9568 9333  
Stanmore NSW 2048    **Fax** 02 9569 0133

**WEB** [www.newingtoncollege.nsw.edu.au](http://www.newingtoncollege.nsw.edu.au)  
**EMAIL** [contact@newingtoncollege.nsw.edu.au](mailto:contact@newingtoncollege.nsw.edu.au)

**Discover.**  
what's possible

