

Newington College



Discover.  
what's possible



UNIFORM AND GENERAL  
**REGULATIONS**



A boy is admitted to Newington College on the understanding that his parents or guardians are aware of the aims and policies of the College and will do whatever they can to ensure that he conforms with such regulations as the College deems necessary.

### **UNIFORM SHOPS**

The three campuses at Stanmore, Wyvern and Lindfield each operate their own shops, where uniform and other items can be purchased.

#### **WYVERN SHOP**

Term Time Operating Hours: Mondays/Thursdays 8.00–9.30am  
Tuesdays/Fridays 2.30–3.30pm

Please confirm operating hours with the Wyvern Office: 9568 9444. Operated by the Wyvern Parents' & Friends' Association.

#### **PREP SHOP, LINDFIELD**

Term Time Operating Hours: Tuesday 8.00am–9.00am

Please confirm operating hours and appointments with the Lindfield Office: 9416 4280. Operated by the Lindfield Parents' & Friends' Association.

#### **THE NEWINGTON SHOP – STANMORE CAMPUS**

The Newington Shop at Concordia stocks all Years 7–12 uniforms.

The following items are available: blazers, trousers, shorts, shirts, polo-shirts, pullovers, socks, ties, belts, school bags, sports items, crested goods, etc.

Term Time Operating Hours: Monday to Friday 8.00am–4.30pm.

1st Saturday of each school term 8.00am–12.00noon. Refer to the Black & White newsletter for variations to these times. Operated by Midford/Stamina: ph 02 9568 9427

To outfit new boys it is preferable to make an appointment so as to ensure that attention can be given to each boy.

#### **SECOND-HAND CLOTHING POOL YEARS 7–12**

Located in the Concordia building opposite the Stanmore 7–12 campus, the Second Hand Clothing Pool is operated by the Newington Women's Group. The Clothing Pool will be open on Mondays at 7.30–8.30am and every Wednesday between 8.00–10.00am and 3.00–4.30pm for purchase and delivery of uniform items.

## **GENERAL REGULATIONS**

---

**Minor differences of practice are followed in the two Preparatory Schools. Parents are advised of these separately.**

### **APPEARANCE**

Uniform school clothing, as described hereunder, must be worn to and from school, and on all school and GPS occasions. There are only two exceptions to this general regulation: reasonably informal clothing (shirt with a collar, long trousers, shoes and socks) may be worn to rehearsals and to evening plays and concerts, and appropriate, clean Newington sports wear may be worn by boys travelling to and from sport on a Saturday as players. Jackets and trousers must be clean and pressed. Shoes must be clean. Hair must be tidy and reasonably short, not dyed, and neither grown nor groomed in an extravagant fashion. No jewellery other than approved Newington badges may be worn. If some emergency forces a boy to wear a non-uniform article of clothing to school, he must bring to the GDO a note from his parents explaining the circumstances. Extended leave with involve approval from the Head of Stanmore.

## UNIFORM REGULATIONS – STANMORE

**ALL ARTICLES OF CLOTHING MUST BE CLEARLY AND INDELIBLY LABELLED.**

### **STANDARD UNIFORM – compulsory during Terms 2 and 3**

- BLAZER:** Made of back 100% wool and bound at the edges to show white braid 1.5cm wide, with braid also 7.5cm from bottom of cuffs and 1.5cm from top of pockets. There is a white standard Newington crest (Wyvern) on the pocket.
- TROUSERS** Long cuffless mid-grey made of wool blend (45% wool, 55% polyester) and worn with a black belt.
- SHIRT:** White long-sleeved with double button-down pockets, pen-hole opening allowance on left pocket flap, full yoke, 2-way deluxe collar with stiffness for all sizes, and Newington crest (Wyvern) on pocket.
- TIE** YEARS 7–9: Diagonal black and white stripes. YEARS 10–11: Diagonal black and white stripes, with black Wyverns on white stripe panels.  
YEAR 12: House Prefect tie.
- SOCKS/SHOES:** Black socks and black lace-up school shoes.
- PULLOVER:** Black with raglan sleeve and rimolde neckline. White Wyvern including motto IN FIDE SCIENTIAM positioned on left breast.
- RAINCOAT:** Safety yellow or Newington Coat.
- APRON:** A protective apron is available for use in Design & Technology classes, and in Science Practical classes.

### **SUMMER UNIFORM – optional during Terms 1 and 4**

- YEARS 7–9:** White short-sleeved with double button-down pockets, pen-hole opening allowance on left pocket flap, full yoke, 2-way deluxe collar with stiffness for all sizes, and Newington crest (Wyvern) on pocket; college tie; standard uniform trousers, or mid-grey polyester-and-viscose Bermuda shorts; for shorts with belt-loops, black belt; mid-grey long socks with Newington tops; shoes as for Standard Uniform. Pullovers may be worn.
- YEARS 10–12:** White short-sleeved with double button-down pockets, pen-hole opening allowance on left pocket flap, full yoke, 2-way deluxe collar with stiffness for all sizes, and Newington crest (Wyvern) on pocket; college tie; standard uniform trousers, or navy blue polyester-and-viscose Bermuda shorts; for shorts with belt-loops, black belt; white long cotton/polyester socks; shoes as for Standard Uniform. Pullovers may be worn.

## UNIFORM REGULATIONS – STANMORE

### **SUMMER UNIFORM (continued)**

- CAP:** The wearing of the Newington baseball-style cap is encouraged only within the college grounds, and with approved sports dress elsewhere.
- SCHOOL BAG:** Black Newington backpack. (Black Caribee College 30s and College 35s action back system, with logo blackened out, are also permissible.) No other bag is permitted.
- Sports bag must be a black Newington sports bag or plain black bag.

### **SPORTS CLOTHING AND OTHER ITEMS (other brand logos are not to be visible)**

Special uniform items may be approved from time to time for the 1sts and 2nds, and for touring parties. Otherwise, the following are to be worn:

- PE:** For Physical Education classes: Regulation black shorts with pockets at sides; Shirt – cooldry fabric, white body and sleeves, black collar, PE Polo, black Wyvern including motto IN FIDE SCIENTIAM positioned on left breast (or, in very cold weather, a Newington rugby jersey or House jersey). White sneakers (throughout these specifications, sneakers with stripes are permissible so long as they are predominantly white; soles must be of the non-marking variety). Black speedo-type trunks (these swimming trunks do not have 'NEWINGTON' printed on the back – these are for Swimming/Water Polo teams only).
- ATHLETICS:** Black shorts with white stripes 2.5 cm wide down outer leg-seam, there is also a 2.5 cm wide stripe around the bottom of the legs and 1.5 cm from the edge. White ankle-socks with appropriate footwear. For inter-school meetings, a black and white vertically-striped sleeveless singlet is worn.
- BASKETBALL:** Newington singlet with Wyvern fused on left chest, with allotted number attached back and front; black NC shorts; white ankle-socks; basketball shoes must have non-marking soles. Black and White reversible training singlet & PE shorts for training.

# NEWINGTON COLLEGE

## YRS 7 - 9 ACADEMIC UNIFORM

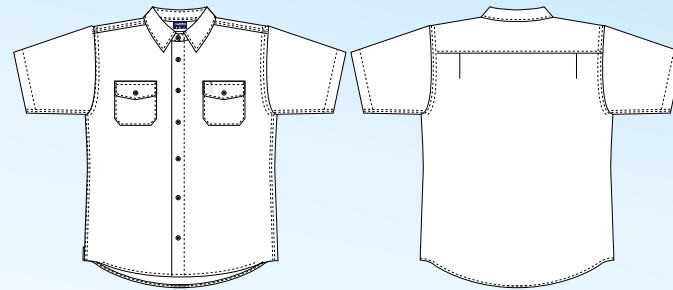
Page 1



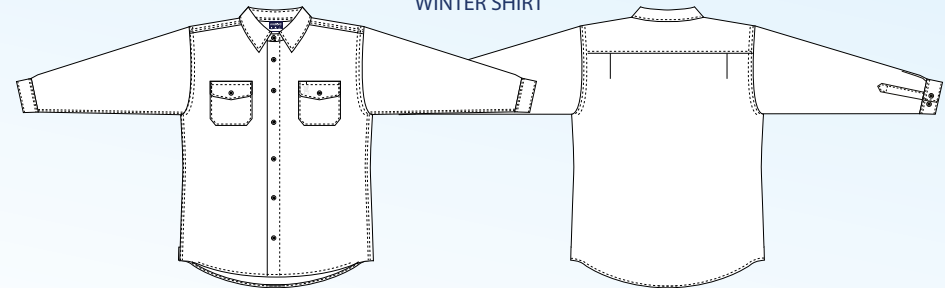
BLAZER



SUMMER SHIRT



WINTER SHIRT



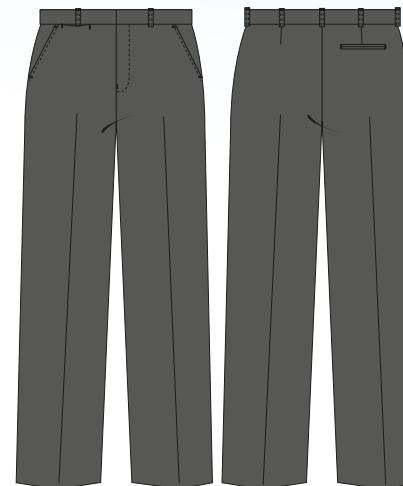
JUMPER



SHORTS



TROUSERS



SCHOOL SHOES



WINTER SOCK



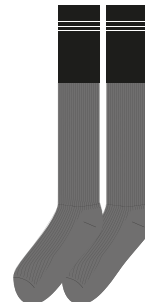
CAP



TIE



SUMMER SOCK



BELT



SINCE 1946  
**midford**

Copyright in relation to these design concepts developed by Midford for Newington College are owned by Midford 2014-2014.

## UNIFORM REGULATIONS – STANMORE

### SPORTS CLOTHING AND OTHER ITEMS (Continued)

- CRICKET:** Long or short white or cream trousers with matching Newington shirt (PE shirt and shorts may be worn for practice only); cricket boots or white sneakers; white socks; soft white hat or Newington cricket cap; cream or white pullover, plain or with two 7.5mm black stripes at neck, waist, and cuffs.
- CROSS-COUNTRY:** As for Athletics. In addition, members of the Cross-Country team may wear a heavy-duty brushed-cotton, all-white, longsleeved top with a V-neck and enclosed drawcord, a black Wyvern (7.5cm x 5 cm) on the left chest, an attached white hood with a black inside and vertical pockets let into the front.
- FENCING:** As for Physical Education, unless boys have specialised fencing clothing.
- JUDO:** Single weave, white martial arts shirt and trousers. P.E. uniform for training.
- ROWING:** Newington rowing suit; white pullovers may be worn; Newington football socks and white sneakers; white NC hat when training.
- RUGBY:** Black rugby shorts, Newington jersey (black bands 15 cm wide, separated by white bands 15 cm wide, black collar), Newington rugby socks (black with white tops and two white bands 5 cm wide between ankle and tops), garters, predominantly black rugby boots with black laces. Mouthguard.
- SOCCER:** Black soccer shorts, Newington jersey (black and white alternate vertical stripes, short sleeves, V-neck, black binding on collar and sleeves), black socks with white tops, garters, shinpads.
- SWIMMING/  
WATER POLO:** Black Newington costume, with 'NEWINGTON' printed on back.
- TABLE TENNIS:** As for Physical Education.
- TENNIS:** White shorts; PE shirt; white ankle-socks and white tennis shoes or sneakers; white tennis hat with 'NC'.
- VOLLEYBALL:** Basketball shorts & PE shirt with non marking sole shoes.
- TRACKSUIT:** Only official Newington tracksuit to be worn or wet weather jacket/pants.
- HOUSE SINGLET  
AND JERSEY:** Each boy must have a bond-type singlet and jersey in his House colours.
- SPORTS BAG:** Black Newington sports bag (one of 3 sizes) or plain black bag or case.
- HEADGEAR:** For outdoor sports practice and games during the summer, boys are required to wear a white cotton or canvas hat with a wide brim or a white 'legionnaire-style' cap with neck flap (and Wyvern on the front). The Newington baseball-style cap may be worn for practices but not for games.

## UNIFORM REGULATIONS – STANMORE

### COLOURS AND OTHER AWARDS

No awards may be bought or worn without an 'authority to buy' addressed to the supplier and signed by the Head of Secondary or the Sportsmaster. If any addition or alteration is to be made, a similar authority is required, and the blazer must be presented to the Head of Secondary or Sportsmaster when authority is sought.

If a boy is awarded Letters for an activity in more than one year (a re-date) it will be recorded thus:

2nd CRICKET PREMIERS 2000-2001

House Colours Badge and House Honour Colours Badge: Worn beside the left side-pocket of the blazer, such that the top of the badge will be on a line level with the bottom edge of the white braid of the pocket and the top edge of the badge will be 1.5 cm from the edge of the pocket.

GPS Colours Badge: GPS Colours badge is worn beneath House Colours badge. If a boy is awarded more than one GPS badge the second and subsequent badges are worn on the pocket.

Cadet Colours Badge: Worn beside the right side-pocket of the blazer, such that the top of the badge will be on a line level with the bottom edge of the white braid of the pocket and the top edge of the badge will be 1.5 cm from the edge of the pocket.

Only Newington College and GPS cloth badges are worn on the Newington blazer.

If a boy is awarded Colours, he is entitled to wear a special 'Firsts' crest (the Coat of Arms) on his blazer pocket, together with words and dates on the pocket after this fashion:

CRICKET 2010

ATHLETICS 2011

If a boy is awarded Colours for an activity in more than one year (a re-date), it will be recorded thus:

RUGBY 2010-2011

ROWING 2010-2011-2012

That is to say, the name of the activity will appear only once.

If a boy wins several colours and finds there is not enough room on the breast-pocket below the scroll, the Colours may be placed just below the pocket.

If a boy is awarded Letters as a member of a premiership seconds team or crew, he is entitled to words and dates on the pocket after this fashion:

2nd CRICKET PREMIERS 2010

2nd VIII PREMIERS 2009

Please note that this award does not entitle the wearing of the 'Firsts Crest'.

## UNIFORM REGULATIONS – PREPARATORY

### STANDARD UNIFORM – Compulsory during Terms 2 and 3

- SUIT:** Mid-grey wool blend (45% wool, 55% polyester). Coat is of standard cut, single breasted with three buttons, standard lapels, crest embroidered on breast pocket, short trousers, grey belt. The coat may have a single rear vent.
- SHIRT:** Long sleeve style. Yarn dyed grey-white stripe, double button down pockets, pen-hole opening allowance on left pocket flap, full yoke, 2 way deluxe collar for all sizes.
- TIE:** Uniform tie, 100% polyester, diagonal black and white stripes.
- SOCKS:** Mid-grey wool-and-nylon long socks with Newington-striped tops.
- SHOES AND CAP:** Black lace-up school shoes; black short-peaked cap with Newington crest.
- PULLOVER:** Black with raglan sleeve and rimolde neckline. White Wyvern including motto: IN FIDE SCIENTIAM, positioned on left breast.

### SUMMER UNIFORM

- SHIRT:** As above, but short-sleeved.
- SHORTS:** College mid-grey polyester-and-viscose permanent-press. *Kindergarten & Years 1 – 2:* boxer-style shorts with shirred elastic waist. *Years 3 – 6:* half-shirred elastic back and extended front waistband, no side buckles, zip fly.
- SOCKS:** As for Standard Uniform but cotton and nylon stretch.
- TIE:** As for Standard Uniform. Not required below Year 3 at Lindfield.
- SHOES AND CAP:** As for Standard Uniform.

### BLAZER OUTFIT

- OPTIONAL:** As for Stanmore Campus (the cap is not worn with the blazer outfit).

### SPORTS CLOTHING AND OTHER ITEMS

- HAT:** At Wyvern House, a uniform white hat with Wyvern on front and green under the brim; an alternative at Lindfield is a white 'legionnaire style' cap with Wyvern on the front and with neck-flap. Hats are compulsory for outside play at morning-break and lunchtime, and at sport.

## UNIFORM REGULATIONS – PREPARATORY

### SPORTS CLOTHING AND OTHER ITEMS (continued)

- PE:** White polo style shirt with black collar, placard and trim on sleeve edge with black Wyvern including motto: IN FIDE SCIENTIAM, positioned on left breast, black PE shorts, white socks and white shoes.
- INTER-SCHOOL ATHLETICS AND CROSS-COUNTRY:** Black and white striped athletics singlet, PE shorts (black running style shorts optional), white socks and predominantly white shoes.
- SCHOOL ATHLETICS AND CROSS-COUNTRY:** House coloured polo shirt, PE shorts (black running style shorts optional), white socks and predominantly white shoes.
- BASKETBALL:** Newington basketball uniform, predominantly white joggers or basketball shoes with nonmarking soles.
- CRICKET:** White standard short sleeved Newington cricket shirt (not crew neck), white polyester and viscose permanent press shorts (or as an option for cricketers, long white trousers and a white long sleeved shirt), ankle length white socks, white sport shoes with non marking soles.
- TENNIS:** Newington tennis uniform as worn in the Stanmore Campus.
- SOFTBALL:** White polo style shirt with black collar, placard and trim on sleeve edge with black Wyvern including motto: IN FIDE SCIENTIAM, positioned on left breast, black PE shorts, Newington black and white striped socks and white shoes.
- RUGBY:** Jerseys, shorts and socks as for Stanmore Campus. Black boots (with moulded soles are preferred), no part of the boots studs may be nylon or plastic. Mouthguards are compulsory for rugby and recommended for soccer. Shin pads are compulsory for soccer.
- SWIMMING:** Plain black speedo trunks. Boys selected in the Newington Swimming team are required to wear plain black trunks with 'NEWINGTON' written on the back.
- TRACKSUIT:** As for Stanmore Campus.
- CASE:** A Newington backpack, available only at the Preparatory Schools.
- ART SMOCK:** A man's long-sleeved shirt, complete with buttons, or a smock cut according to art teacher's pattern.
- RAINCOAT:** Safety yellow.
- SPORTS BAG:** None required for Wyvern. Lindfield boys who want to carry a sports-bag should purchase

# NEWINGTON COLLEGE

P.E. Uniform - Retail Version

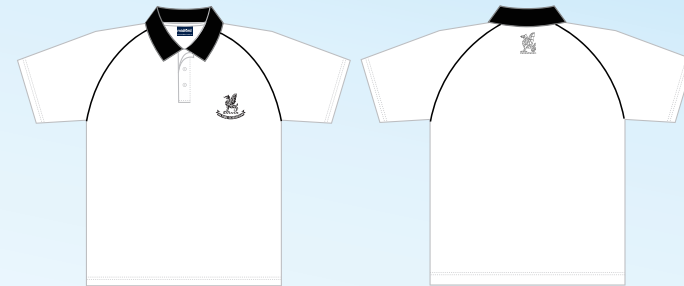
Page 1/7



MICROFIBRE TRACK JACKET



P.E. POLO



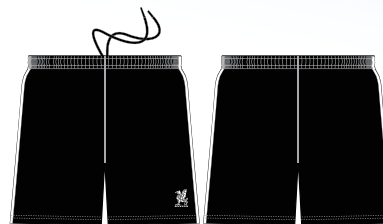
P.E. CAP



MICROFIBRE TRACK PANT



MICROFIBRE P.E. SHORT



PLAIN WHITE SPORT SOCKS



SINCE 1946  
**midford**

Copyright in relation to these design concepts developed by Midford for Newington College are owned by Midford 20-10-2014



# Newington College

200 Stanmore Road    **Tel** 02 9568 9333  
Stanmore NSW 2048    **Fax** 02 9569 0133

**WEB** [www.newingtoncollege.nsw.edu.au](http://www.newingtoncollege.nsw.edu.au)  
**EMAIL** [contact@newingtoncollege.nsw.edu.au](mailto:contact@newingtoncollege.nsw.edu.au)

**Discover.**  
what's possible

